



User Manual Nature Incorporate



Inhaltsverzeichnis

User Manual Nature Incorporate	3
1. Introduction.....	3
2. Preparations	4
3. Registration	4
4. User Roles.....	6
Super Admin	6
BOP Focal Point	6
Corporate Admin	6
Site Admin	6
5. Data Input and Features.....	7
Dashboard	7
Enter company data	7
Add new site.....	7
Invite new site manager	7
Map feature.....	7
Start assessment	7
Create Site Report	8
Aggregate Company Report	9
Generate National Report	9
Filter data sets	9
6. Description of Reports.....	10
6.1. Site Report.....	10
6.2. Company Report (of various sites).....	11
7. Indicators and key data	12
Cluster 1: General information on premise(s).....	12
Biodiversity Area	13
Cluster 2: BOP's biodiversity inside company areas.....	13
Cluster 3: Biodiversity in the surroundings	15
Cluster 4: BOP promotion activities	16
Social Area	16
Cluster 5: Involvement and awareness of staff.....	16
Cluster 6: Awareness-raising for citizens/ stakeholders	16
Corporate Area	17
Cluster 7: Integrating biodiversity into the company's management.....	17
Cluster 8: Biodiversity integration across the company.....	18
Cluster 9: Biodiversity promotion across business sector.....	18

8. Table overview of questions and Indicators/ Key data	19
Annex I Alien Invasive Species.....	24
Annex II Key indicator species.....	26

List of Figures

Figure 1: Screenshot registration form	5
Figure 2: User roles and levels	6
Figure 3: Screenshot info boxes	8

List of Tables

Table 1 Extract Site Report Part II.	10
Table 2 Example answers of all company sites	11
Table 3 Example summarised key data of all sites of a company	11
Table 4 Questions and key data of Nature Incorporate.....	19

User Manual Nature Incorporate

1. Introduction

More and more companies and other organizations decide to implement biodiversity-oriented premises (BOP) and real estate. This is responsible and future-oriented, because BOP is a concrete contribution to the protection of local biodiversity, supports climate protection and adaptation to climate change and contributes to the well-being of the staff. Additionally, often BOP leads to further steps of biodiversity management in the company or organisation.

For companies and organisations with BOP, monitoring of the development of BOP offers great added value: decisions regarding future development of BOP areas can be made better, further positive impacts are recorded and information is provided for legally required and voluntary reporting. The user receives recommendations to achieve continuous improvements.

The Nature Incorporate Monitoring System enables companies to record the initial situation of BOP-areas and to track the development of elements that provide potential for more biodiversity over time. This facilitates, for example, a comparison with the companies' goals, such as a continuous growth of BOP-areas over time. It is a self-assessment and not an external validation of what has been achieved. However, NI monitoring provides helpful information on the current status regarding BOP if external certification is being sought.

The monitoring system is structured in three areas:

- direct effect on local biodiversity and the connection to green infrastructures
- effect on the social aspects related to the environment
- effect on the company's environmental management

These areas interact with each other, e.g. the involvement of staff into the development of BOP as well as the contribution of BOP to the wellbeing and awareness of the employees. Maybe, the person responsible for monitoring cannot fill all information asked for and needs to request information from the colleagues of the personnel department and others. But this effort has a positive effect because it shows that the impacts of BOP have various dimensions. Probably, at the beginning, NI users still have information gaps and cannot answer all questions. That doesn't matter – only the available information will be evaluated. But users should take the gaps as an opportunity to obtain the missing information.

We highly appreciate the feedback from NI users. It will be considered to regularly improve and adapt the monitoring system.

What Nature Incorporate cannot do

The monitoring system does not replace on-site assessments nor monitoring of species by an expert. The standardised query of information was designed to fit all EU countries. This means that the questions do not go into depth, but collect information relevant to biodiversity in all regions. Biodiversity is complex. For example, the development of biodiversity depends on numerous factors, some of which go beyond the condition of the premises, such as the effects of climate change or sources of disturbance in the immediate vicinity (high traffic density, noise, physical barriers). For this reason, the monitoring focuses on the "potentials for biodiversity", i.e. on the habitats that are created and/or protected and their appropriate extensive maintenance.

This is primarily quantitative information. Only in a few places does the system ask for data that provide conclusions about the quality of the biodiversity-oriented premises, e.g. the number of species in the pond or in the extensive pasture. No species counts are recorded. However, it is asked whether monitoring of key species is implemented, i.e. species that allow conclusions to be drawn about the integrity of the habitats.

Other monitoring activities, e.g. regular recording of wild bees, butterflies and other species groups are of course helpful – if they are carried out professionally and at regular intervals (e.g. every 2-3 years). So-called "citizens science" - the involvement of trained laypersons - is also becoming increasingly important for biodiversity monitoring. It offers good opportunities to integrate knowledge and interest from the staff.

2. Preparations

The first run of answering the assessment takes about 3 – 4 hours. Experience shows that the first recording of the initial situation takes more time, but after that only the changes are recorded. The status of biodiversity of your company is monitored in a complete web environment containing questions, species lists and data. With multiple choice and selection of answers from a predefined list, completing the monitoring questionnaire is very user-friendly and easy to handle.

The Nature Incorporate Monitoring System can be found on the website:

<https://natureincorporate.eu/>

3. Registration

- a. Go to the website <https://natureincorporate.eu/user/register>
- b. Fill in the registration form (see below)
- c. Choose a user role. You can find the role descriptions below the entry field.
- d. Accept the General Terms of Use
- e. Click on "Create new account"
- f. Your registration will be sent to the Lake Constance Foundation (Super Admin). It will be checked whether the registration is valid (e.g. whether the person registered actually belongs to the organisation he/she has chosen).
- g. After the check, you will receive a confirmation email and can log in with your chosen password and start entering data.

Create new account

[Log in](#) [Create new account](#) [Reset your password](#)

Choose a role

Site admin

- Site Admin is responsible on the specific site to document biodiversity, social and corporate actions and monitors their progress.
- Corporate Admin enters data of multiple sites that belong to the company and aggregates them into company reports.
- BOP Focal Point provides support in the respective country and has access to the national monitoring reports.

Email address

The email address is not made public. It will only be used if you need to be contacted about your account or for opted-in notifications.

Password

Provide a password for the new account in both fields.

Contact Info

First name

Last name

Phone number

070 123 4567

Address

Country

- None -

Accept Terms & Conditions of Use

Create new account

Figure 1: Screenshot registration form

4. User Roles

The role of the user is assigned when the user registers for the first time. The super admins (Lake Constance Foundation) will appoint a company manager in consultation with the company/organisation who will be granted the rights described below.

Super Admin

The Super Admin has the overall administration of the website and the access to everything that is available to the roles below.

BOP Focal Point

The BOP Focal Points provide troubleshooting and support on the national level. For this, they have access to all data sets in the country they are responsible for. The Focal Points has the possibility to filter the data sets to demonstrate the effectiveness of the initiative and to find potentials to improve biotope corridors and other ecological structures. A country can have several BOP Focal Points.

Corporate Admin

The Company Admin enters data for multiple sites that belong to the company and has the possibility to invite and delete the Site Admins of the company sites. He/ she has access to the Site Reports on all individual sites that belong to the company and to the Company Report based on aggregated data sets of all sites of the company. He/ she can view, edit, copy, block and/or delete all data sets of his/her organisation.

Site Admin

He/ she enters data for a specific site of the company and has access to the saved /finalized assessment. Site Users are authorised to manage their own records: view, edit, copy, block and/or delete.

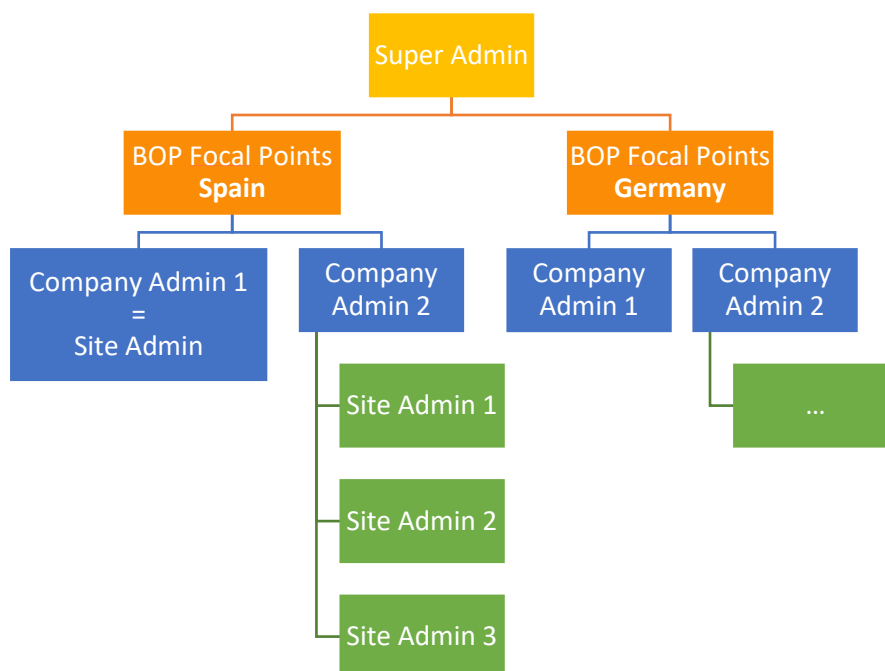


Figure 2: User roles and levels

5. Data Input and Features

Dashboard

The language setting can be found in the dashboard. The actual version is available in English and German (Spanish version is coming soon). You can edit your personal data under "My profile" and find the sites assigned to you under "My sites". If you need help and guidance, click on the support page in the dashboard. Contact the Bop Focal Points in your country if you have any difficulties or questions about the content.

Enter company data

After the successful registration in the system, the company and site data are entered first. On the company profile, there are the sections: company data, contact info, company sites and site admins. Please, use the precise name of the company.

Add new site

Use the precise name of the company site and the address your biodiversity-oriented premise. To fill in the Geo data, you enter your location on a separate map service and with the right mouse click the coordinates for copying appear. The first number is the latitude and second the longitude. The coordinates are accepted by the system if they are entered with a full stop and not with a comma, otherwise an error message appears. The NACE Code dropdown menu appears, when you enter a key word or the first numbers of your activity. Enter the contact info of the chosen site admin.

Invite new site manager

The corporate manager assigns the site managers to the specific site via the invitation function. Insert the email contact and click "send invite".

Map feature

The datasets will include the GIS-coordinates of the BOP-site, a company wishes to monitor. The map shows the closest Natura 2000 sites with the links to the site-factsheets. The relevant information is extracted and displayed in a table under the map, e.g. the distance to protected areas, examples of habitats and occurring species. This information is used to answer several questions in the assessment.

Start assessment

Start the assessment on the site page in the red section "Site form" and click on the button "+ Add Site Form". You can also copy an existing data sheet with "duplicate". This is useful for later assessments to transfer information that has not changed, e.g. constructed size (m²), presence of water bodies on the premises, participation on trainings in the past etc. These data do not have to be entered every year.

You "submit" the form after you have entered all the required information. Save the form as a draft to continue later. All assessments are listed on the site page, where you can view the completed and submitted data sheet by clicking on the "Operations".

The questionnaire consists of 62 main questions and 62 sub-questions with selectable and multiple-choice answers. For some indicators it is possible to collect exact values to complete the questionnaire, e.g. the size of the company area. There are other indicators or ratios for which it may be more difficult to determine the exact values. If you have to estimate, please try to do so as correctly as possible. It is useful to note down how you estimated the value so that you can estimate it in the same way in the next monitoring period, if necessary.

Along the questionnaire you will find infoboxes, explanations and country-specific separate pages with lists of alien invasive species and key indicator species. When you click on "[More Information](#)" the

extensive details appear below. Moreover, there are info boxes, which appear, when you hover over the blue question mark (Figure 3).

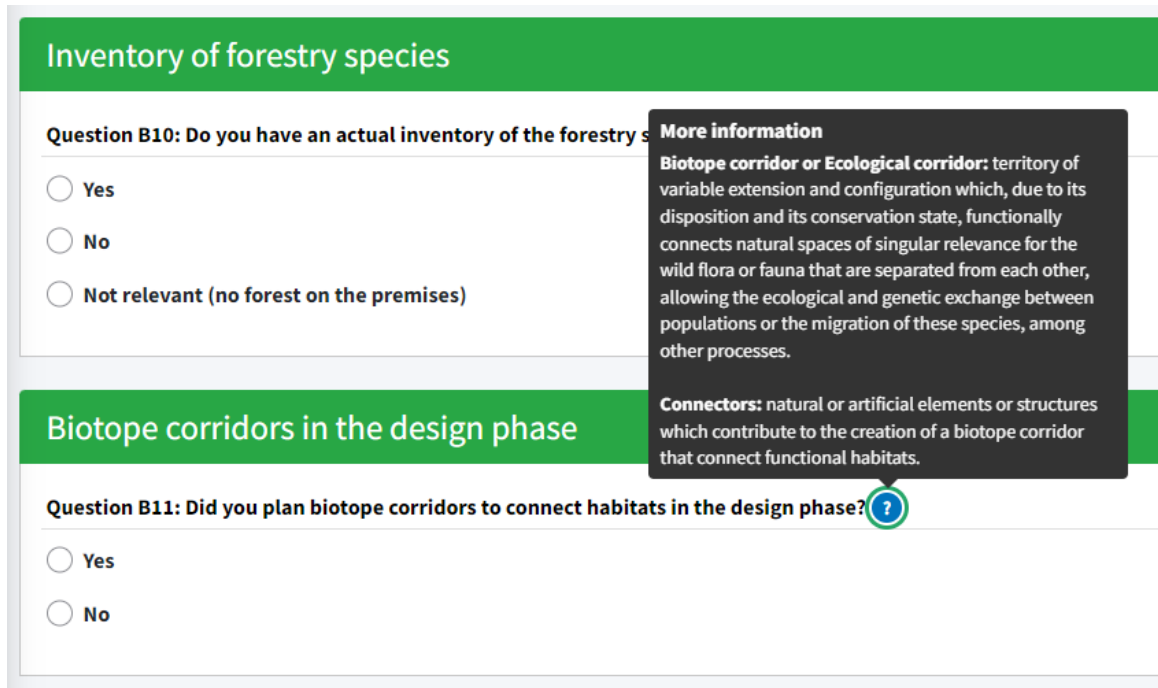


Figure 3: Screenshot info boxes

Create Site Report

The Site Report is exportable on the site profile in the red assessment section. It is possible to edit, view, duplicate and delete the Site Reports and you can see the starting and completion date.

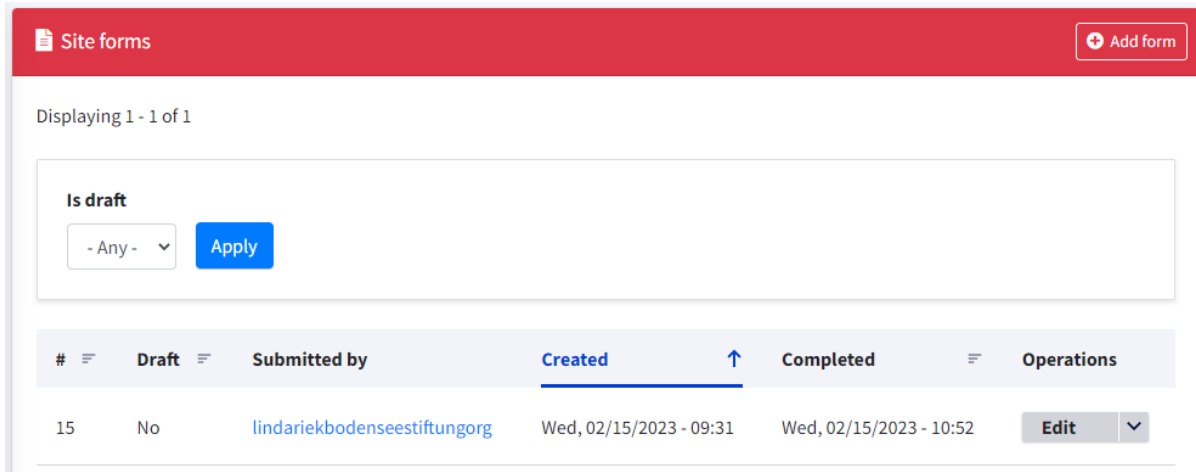


Figure 1: Site forms

Aggregate Company Report

To create and download the Company Report, select the “Assessment year” at the top left of your company profile and export it with the blue button. If you do not filter the year, you will receive the monitoring report based on the data of all company sites. Example: The Monitoring Report 2024 will include the latest data of the sites included in 2022 and 2023. The system automatically aggregates the assessments of your sites into one Report. There are summarised diagrams and it shows the areas at a glance.

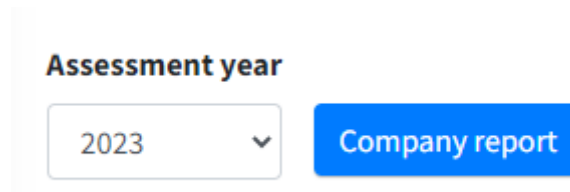


Figure 2: Company report

Generate National Report

The National Report can only be requested by a BOP Focal Point for the respective country. Please, find the download and filter options on the “Assessment data” page. If the BOP Focal Point does not filter “Year of assessment”, the monitoring report will be based on the latest data of all sites in the country registered in the NI. Example: The Monitoring Report 2024 will include the latest data of the sites included into NI in 2022 and 2023.

Filter data sets

To demonstrate the effects of the initiative and to see the bigger picture, the BOP focal points have the possibility to filter the data sets in the country. For example, the filter can show all sites in or near protected areas to improve connectivity. Or the BOP Focal Point wants all the data from companies in the construction sector via the NACE Code. The following filter functions are established on the “Assessment data” page:

- Size of premises: equal or more than m²
- NACE Code
- Year of site assessment
- All sites in protected areas (calculation not possible with the actual map)
- All sites in a distance equal or less than 5 km to a protected area (calculation not possible with the actual map)

6. Description of Reports

The reports include an assessment of strengths and weaknesses for certain aspects and indicators. Depending on your role in the system, you are able to create a Site, Company or National Report.

6.1. Site Report

PART I. The first part of the report gives an overview of the site with all the general information, the location on a map with nearby protected areas and a pie chart showing the share of the BOP area in the total premises in the current reporting period. The chapter includes all answered questions of the assessment in the Biodiversity, Social and Corporate Area extracted as tables and text elements.

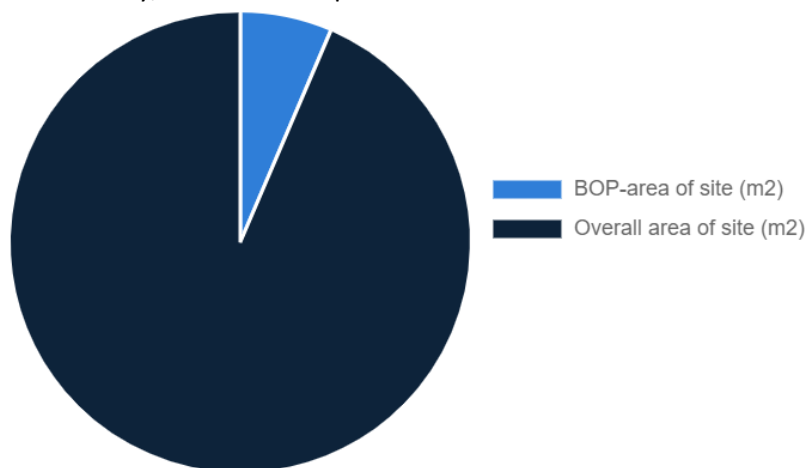


Figure 3: Current BOP area

Part II. This is followed by the second element "Recommendations for improvement", which consists of a table, with the performance of your biodiversity at the site. The status is highlighted with traffic lights, depending on which score you have achieved. Is it coloured in green, there is no need to take action. The score field remains empty if you have not answered the question. In case of yellow and red, there is potential for improvement and you follow the links with further information in the right column. This is peppered with links to experts, suppliers (e.g. of native seeds), service providers for BOP maintenance and initiatives in which you can participate. The further information will be extended continuously. Example:

Table 1 Extract Site Report Part II.

Aspect	Score	Status	Further Information
Quality of Habitats			
Overview on habitats in the surroundings of the facilities	●	Knowledge about habitats in the surroundings helps to create adequate habitats on the premises.	
Overview on habitats in the surroundings of the facilities	●	Screening of the habitats in the surroundings is strongly recommended.	Europe: European protected sites — European Environment Agency (europa.eu) Spain: Espacios Naturales Protegidos (miteco.gob.es) Germany: Schutzgebiete in Deutschland (bfn.de)
Use of native species	●	Native species contribute to biodiverse habitats.	
Use of native species	●	The company should use native species on the premises.	Germany: https://www.gaertnerrei-strickler.de/

Use of native seeds	●	Native seeds contribute to biodiverse habitats.	
Use of native seeds	●	The company should use native seeds on the premises.	Germany: https://www.rieger-hofmann.de/alles-ueber-rieger-hofmann.html
Biotope corridors on the premises	●	Connection of habitats via biotope corridors increases the quality of habitats.	
Biotope corridors on the premises	●	Connecting habitats would increase the quality of habitats and facilitate movement of animals.	Spain: Autopistas Salvajes Informe.pdf (wwf.es) Germany: Schutzgebiete in Deutschland (bfm.de) Slovakia: Dokumenty ÚSES v SR Slovenská agentúra životného prostredia SAŽP (sazp.sk) http://maps.sopsr.sk/
Monitoring of alien invasive species	●	Alien invasive species are monitored.	
Monitoring of alien invasive species	●	Alien invasive species should be monitored in order to take measures if they spread.	Spain: Catálogo Español de Especies Exóticas Invasoras (miteco.gob.es) Germany: Neobiota: Naturschutzfachliche Invasivitätsbewertungen gebietsfremder Arten für Deutschland (bfm.de) Slovakia: Invázne druhy – Invázne druhy (sopsr.sk)

6.2. Company Report (of various sites)

If a company has several registered sites and assesses them with the questionnaire, the data is combined and aggregated into one Report. The output is an overview on the current situation of all sites focused on the status of biodiversity inside and outside the premises, the involvement of staff, awareness raising for citizens/ stakeholders and the integration of biodiversity in the companies' management. The data of the company sites are partly presented side by side in tables so that they can be compared (Table 2). Other key figures are summed up or shown proportionately in bar charts for the whole company (Table 3). For example, the total surface of green roofs, percentage of habitats connected or the number of sites answering "yes" to the question about promoting activities for employees.

Table 2 Example answers of all company sites

Site	No control	Control, but <u>no</u> corrective measures	Control and corrective measures
Site A	x		
Site B			x
Site C		x	
Etc.			

Table 3 Example summarised key data of all sites of a company

Nesting boxes	Insect friendly lighting	Watering places	Deadwood piles	Single old trees	Natural structures rainwater	Floating platforms	Native perennials
Total number	Average %	Total number	Total number	Total number	Total number	Total number	Total number

7. Indicators and key data

The following chapter describes the indicators and key figures for the Biodiversity Monitoring System, as well as the results in the report. The data is assigned into 9 clusters.

Cluster 1: General information on premise(s)

Cluster 2: BOP's biodiversity inside company areas

Cluster 3: Biodiversity in the surroundings

Cluster 4: BOP promotion activities

Cluster 5: Involvement and awareness of staff

Cluster 6: Awareness-raising for citizens/ stakeholders

Cluster 7: Integrating biodiversity into the company's management

Cluster 8: Biodiversity integration across the company

Cluster 9: Biodiversity promotion across business sector

Cluster 1: General information on premise(s)

The first set of questions is general information about the company, such as the industry, number of employees and knowledge about biodiversity. The following fields must be filled in:

- Assessment year
- Number of workers in the monitored area
- Level of knowledge about biodiversity
- Country
- NACE Code

Results in the reports:

- Number of sites registered
- Number of companies participating
- Economic sectors with highest numbers of BOP sites

Indicators: Areas and map

A precise description of the company site and its surroundings with a map facilitate the planning and management of biodiversity aspects. A map provides a good overview of the company site and the structures that influence biodiversity, e.g. size and location of parking spaces, lounges for staff, busy spots and the semi-natural areas. Therefore, the following data are requested and aggregated in the reports. Changes should be recorded on the map and facilitate monitoring.

Results in the reports:

- Size of total surface occupied by the company (m²)
- Size of constructed area (m²)
- Size of non-constructed area (m²)
- URL of a map of the area occupied by the company (using Google Earth, GIS or another tool/software)
- Share of BOP area on the site (%)
- Share of BOP area on the company sites (%)
- Nationwide total surface of companies' premises, BOP and green elements (m²)
- Share of BOP in the non-constructed area (%)

Biodiversity Area

Cluster 2: BOP's biodiversity inside company areas

The first set of questions is seeking to find out what the BOP surface or extension is and the type of habitats classification according to European classification of land use and land cover (LULC). Moreover, it is sought to get information about the species and supporting structures on BOP, the management of BOP and the monitoring of key indicator and alien invasive species.

Indicators: Habitat types and structures on the premises

The areas are classified in habitat types and which shares are restored, natural or semi-natural. Natural habitats consist of plant and animal species that are largely native in origin and where the primary ecological functions and species composition have not been significantly altered by human activities. Semi-natural habitats are modified in their composition, balance or function by human activities. They developed a high level of biodiversity through traditional agricultural, pastoral or other human activities. Moreover, you should provide an overview on the variety of plants and amount of species present in your BOP, e.g. agriculture, forestry and grassland species. Where possible, small structures can be integrated into the BOP areas. Depending on the desired appearance, e.g. dead wood piles can be deliberately placed as a design element. Stone and sand structures enhance any habitat, whether in the meadow, hedge or on the green roof.

Results in the reports:

- Total BOP area (m²)
- Habitat types on the premises (m²)
- Type of biodiversity supporting structures
- Number of biodiversity supporting structures
- Size of biodiversity supporting structures (m²)
- Share of insect friendly lighting zones (%)
- Size of green roofs/walls (m²)
- Inventory of species on the green elements
- Information about use of native species
- Information about use of native seeds
- Variety and amount of species on natural grassland (number)
- Variety and amount of forestry species (number)

Indicators: Connection of habitats inside the premises

Many valuable habitats for animal and plant species - both large and small - have been and are being lost due to changes in land use, building development and the fragmentation of our landscape by roads, railways or power lines. Not only the loss of area is problematic. Biotopes are divided into isolated individual parts which, due to their small size, are particularly exposed to disturbing influences from their surroundings. Often, they are too small for the survival of many species and their isolation makes the exchange of individuals between the areas impossible. The resulting genetic impoverishment of our fauna and flora endangers the long-term survival of biotic communities and leads to a loss of biodiversity. Linking habitats (biotope network) enhances them and ensures genetic exchange between populations and enables dispersal and recolonisation processes. Corridor structures (e.g. hedges, grass and wildflower strips, rows of trees, ditches and streams) support the animal species in moving between larger habitats and small stepping stones.

Results in the reports:

- Possibility to connect habitats
- Share of habitats connected inside the premise (%)
- Share of habitats connected on all sites of one company (%)

- Share of all sites in the country planning biotope corridors in the design phase of BOP (%)
- Share of all sites in the country extending or creating biotope corridors on the premises (%)
- Share of habitats connected via biotope corridors on all premises in the country (%)

Indicators: Key indicator species to monitor BOP

Key indicator species are species that determine the quality and health of a habitat and its capacity to sustain large communities of individuals. They are used to monitor environmental changes, assess the efficacy of management, and provide warning signals for impending ecological shifts. Key indicator species should be selected with the help of an expert according to the region and to the present habitats. Annex II includes a selection of key indicator species for each country.

Results in the reports:

- Key indicator species selected
- Presence in BOP
- Who monitors
- Monitoring frequency (years)
- Development of population
- Share of sites selecting key indicator species to monitor the development of BOP (%)
- Number of sites reporting strong increase/ increase/ stagnation/ decrease

Indicators: Alien invasive species to monitor BOP

Alien invasive species are introduced artificially, accidentally or intentionally outside their natural range. Its invasion means that native species sometimes cannot compete against them, ending up displaced or dying. These species produce changes in the composition, structure and processes of ecosystems, causing a great loss of biodiversity. Annex I include a list proposal for each country to monitor BOP.

Results in the reports:

- Species present in BOP or surroundings
- Management status
- Monitoring status
- Who monitors
- Monitoring frequency (years)
- Development of population
- Share of company sites with presence of invasive species (%)
- Share of companies with alien invasive species (%)
- Share of companies that have taken measures to control invasive species (%)
- Share of companies informing the nature conservation authority about the presence of alien invasive species (%)

Indicators: Maintenance of BOP

Biodiversity-oriented maintenance always means qualified maintenance. This does not mean that it is more cost-intensive than qualified conventional maintenance. When awarding contracts, the appropriate qualification of the contractors must be checked. The main difference in care is that rigidly fixed maintenance activities are not carried out at fixed times. The quality of natural and semi-natural habitats can be enhanced through extensive management measures. Even the right frequency and time of mowing and removal of the mown material has a positive effect on the biodiversity. You should allow wilderness in partial areas: A high intensity of maintenance for green spaces may satisfy the aesthetic demands of customers, but often competes with criteria such as protection and hiding places, nesting opportunities or a diverse range of food, which are of primary importance for animals. Pesticides do not just control one type of species, they eliminate all wild species e.g. herbs that are

present. At the same time, they do not distinguish between pests and beneficial insects, which is why the damage caused by pesticides usually exceeds the benefits.

Results in the reports:

- Specific aspects to improve quality of BOP areas
- Objectives for further development of BOP
- Responsibility for specific maintenance requirements of BOP areas
- Specific maintenance requirements of BOP in the contract in case of external services
- Share of gardener/ company selected with experience in BOP (%)
- Share of sites with a plan for the maintenance of BOP

Cluster 3: Biodiversity in the surroundings

This set seeks to find out valuable information of the biodiversity-oriented areas that have been created in the surroundings of the company's premises. It should become apparent, if the BOP is in or near a protected site, regional ecological corridor or green infrastructure and if BOP contributes or could contribute to these structures.

Indicators: Connection with habitats in the surroundings

A crucial factor in stopping the loss of biodiversity is the landscape approach. Biotope corridors is territory of variable extension and configuration which, due to its disposition and its conservation state, functionally connects natural spaces of singular relevance for the wild flora or fauna that are separated from each other, allowing the ecological and genetic exchange between populations or the migration of these species, among other processes.

Results in the Report:

- Share of habitats connected (%)
- Distance to the nearest biotope corridors (km)
- Number of sites with potential connectivity between habitats inside and habitats in the surroundings
- Share of sites in the country planning connections or already realized
- Information about biotope corridor(s) in the region
- Information about green infrastructure in the region
- Possibility to connect habitats in the premises with regional or national biotope corridors or other green infrastructure
- Sites with habitat(s) connected with regional or national biotope corridors or other green infrastructure
- Number of sites located in or close to a biotope corridor or protected area

Indicators: Green Infrastructure

Green infrastructure is the network of natural and semi-natural areas and other environmental features, strategically planned, designed, and managed for the provision of a wide range of ecosystem services. It incorporates green spaces (or blue spaces in the case of aquatic ecosystems) and other physical elements of terrestrial (including coastal) and marine spaces. In terrestrial spaces, green infrastructure is present in rural and urban environments (<https://eur-lex.europa.eu/legal-content/EN/TXT/?uri=CELEX:52013DC0249>).

Indicators: Protected area

Companies in or nearby protected areas have a special responsibility with regard to the protection of ecosystems, fauna and flora. In some cases, they also have to consider special legal regulations that are set in the protection status and/or management plan of a protected area. Besides the special responsibility, the premises often have special possibilities to take measures for the protection of endangered habitats and animal and plant species.

Results in the Report:

- Type of protected area
- Distance to the protected sites (km)

Cluster 4: BOP promotion activities

This set of indicators is seeking to find out if your BOP has motivated stakeholders in the municipality to adopt biodiversity actions. And also focuses on the company's contribution to regional or national biodiversity programs of nature conservation promoted by administrations or other organisations such as NGOs.

- Activities
- With whom
- Since when
- Type of initiative
- Type of contribution
- Planned or initiated in ... (year)
- Companies promoting BOP (%)
- Companies informed about initiatives on biodiversity protection in municipality or of NGOs (%)
- Companies supporting biodiversity protection activities or projects of NGOs (%)

Social Area

Cluster 5: Involvement and awareness of staff

This set of questions seeks to get information about the activities that are carried out to raise awareness on the value of biodiversity in general. And in which phases are decision-making managers and employees involved. More importantly, the indicators evaluate the perception that the staff has of BOP and whether biodiversity-friendly designed areas contribute to well-being.

Indicators: Involvement/ Participation/ Awareness/ Well-being of staff

Biodiversity-oriented premises do not preclude their use by employees, on the contrary. Especially this structural and colourful areas can be used as recreational areas. The fact that richness of species has positive effect on health and reduces stress has been proven in many studies. Thus, near-natural can contribute to maintaining the health and productivity of employees. You have an increase of attractiveness as an employer and more resilient employees.

Results in the Report:

- Phases of managers involvement
- Phases of staff involvement
- Phases of informing
- Staff participating (%)
- Ways how BOPs are used by the staff
- Information about contribution to staff well-being
- Type of activities for employees
- Feedback from employees
- Increase of awareness of the managers and employees regarding BOP and biodiversity (%)
- Companies promoting activities for employees related to biodiversity (%)
- Companies with staff using part of the BOP Area (%)

Cluster 6: Awareness-raising for citizens/ stakeholders

This chapter records BOP's contribution to raise awareness of stakeholders and citizens regarding biodiversity. It monitors activities targeted to specific groups and their feedback, e.g. business clients, general public or policy decision makers.

Results in the Report:

- Number of people which participated last year in the activities
- Activities targeted to a specific stakeholder group (number)
- Feedback citizens/ stakeholders
- Companies carrying out activities to raise citizens awareness on biodiversity (%)
- Companies planning to realize awareness-raising activities in the future (%)

Corporate Area

Cluster 7: Integrating biodiversity into the company's management

The consideration of biodiversity in the company's actions and management is to be determined on the basis of the following indicators. The question is whether a management system and a strategy are in place and furthermore, how much money is spent on biodiversity.

Indicators: Environmental Management System and Sustainability Policy

EMAS III: Eco-Management and Audit Scheme is a voluntary environmental management instrument of the European Union, certified by a third party. EMAS defines the processes and structure of an environmental management system which enables organizations to assess, manage and continuously improve their environmental performance.

More details: https://ec.europa.eu/environment/emas/emas_contacts/emas_helpdesk_en.htm

ISO 14001 is an international voluntary standard which defines the processes and structure of an Environmental Management System, certified by a third party. ISO 14001 assists companies in continually improving their environmental performance and complying with any applicable legislation. The standard can be applied to a variety of levels in the business, from the organizational level down to the product and service level. More information: <https://www.iso.org/iso-14001-environmental-management.html>

Results in the reports:

- Type of management system
- Sustainability policy or plan in place
- Type of report which includes biodiversity
- Departments of the company with objectives regarding biodiversity (%)
- Companies with objectives and measures for biodiversity in the environmental /sustainability policy (%)
- Companies reporting on biodiversity (%)

Indicators: Economic aspects

This set of questions is focused on the economic investment made in BOP's, as well as the maintenance costs incurred.

Results in the reports:

- Investment to create BOP (€)
- Investment to maintain BOP (€)
- Investment in BOP planned (€)
- Year of investment (year)
- Annual budget for biodiversity activities (€)
- Nationwide costs to create, maintain BOP and further investments (Count; Average; Minimum; Maximum; Sum)
- Nationwide budget for awareness raising and biodiversity projects (Count; Average; Minimum; Maximum; Sum)

Cluster 8: Biodiversity integration across the company

This set of questions aims to assess whether BOP contributed to the consideration of biodiversity by other units of the company in order to improve the overall biodiversity performance.

Indicators: Risk assessment

More and more standards and companies require a risk assessment of aspects relevant to biodiversity. The risks that arise or could arise from the company's activities should be recorded and assessed, e.g. destruction/degradation of ecosystems and loss of biodiversity. In addition, external risks should be recorded that (could) have a direct impact on the company.

Results in the reports:

- Company sites with a biodiversity risk assessment

Indicators: Key Performance Indicator (KPI)

A Key Performance Indicator evaluates the success of an organization or an activity (such as projects, programs, products, and other initiatives) in which it engages. Choosing the right KPIs relies upon a good understanding of what is important to the organization. For example: projects events, number of people engaged with the project, number of visits to BOPs, etc.

Only with the purpose to inspire, the EMAS KPIs on land-use with regard to biodiversity are described in the following. The company should also select KPIs beyond land use to cover other potential impacts on biodiversity. EMAS III: the forms of land use with regard to biodiversity expressed in units of area (e.g. m² or ha): total use of land, total sealed area, total nature-oriented area on site, total nature-oriented area off site.

Being a nature-oriented area, a space dedicated primarily to nature preservation or restoration. Nature-oriented areas can be located on-site and include roof, façade, water drainages or other elements that have been designed, adapted or are managed in order to promote biodiversity. Nature-oriented areas can also be located outside the organisation site provided that the area is owned or managed by the organisation and is primarily dedicated to promoting biodiversity. Co-managed areas dedicated to promoting biodiversity can also be described, provided that the scope of co-management is clearly outlined. And a sealed area means any area where the original soil has been covered (such as roads) making it impermeable. This non-permeability can create environmental impacts.

→ https://lexparency.org/eu/32009R1221/ANX_IV/

Results in the reports:

- Key Performance Indicator
- Frequency of monitoring (year)
- Results of the latest monitoring
- Type of companies reporting on biodiversity (%)

Cluster 9: Biodiversity promotion across business sector

The company promotes the integration of biodiversity into management decisions in the business sector by being an active member of a Business & Biodiversity initiative, motivating business associations and or chambers of commerce, inviting other companies to exchange experience, or via other actions.

Results in the reports:

- Sites informing other companies, suppliers, customers
- Methods to inform customers about biodiversity activities
- Company sites collaborating with a regional, national or international Business & Biodiversity initiative
- Type of collaboration with Business & Biodiversity initiatives

- Companies informing other companies of the sector (%)
- Companies informing suppliers of their supply chain (%)

8. Table overview of questions and Indicators/ Key data

The following table is an overview of questions in the assessment and indicators/key data as presented in the Site Report.

Table 4 Questions and key data of Nature Incorporate

Cluster	Questions	Key data /Indicator
General Information		
	<ul style="list-style-type: none"> - Assessment year - Number of workers in the monitored area - Size of total surface occupied by the company (m²) - Size of constructed area (m²) - Size of non-constructed area (m²) - URL of a map of the area occupied by your company (using Google Earth, GIS or another tool/software) - Level of knowledge about biodiversity - Country - NACE Code 	<ul style="list-style-type: none"> - Overall area of site (m²) - BOP Area of site (m²) - Share of BOP area of whole premises in the current reporting time-frame (%) - Change of BOP area over time (m²)
Biodiversity Area		
BOP's biodiversity <u>inside</u> company areas	<ul style="list-style-type: none"> - What were the reasons why biodiversity friendly areas have been established by the company and to what extent were these goals and expectations realized? - What is the size of the total BOP surface of the company? - Since your BOP implementation, can you differentiate between natural habitats under management and semi-natural or restored land within the Land Use and Land Cover (LUCL) classification? <ul style="list-style-type: none"> • If YES, please, could you indicate the % of each LUCL represented in your BOP? If needed, select more than one zone if they are present in the BOP. - Which of the following biodiversity supporting structures are present in your BOP areas? <ul style="list-style-type: none"> • Please, specify the number of units or indicate their size. - Does the company have green elements such as green roofs, green walls or others? <ul style="list-style-type: none"> • If Yes, how much in total is the size of this area in the BOP area? - Could you classify the type of these green infrastructures? 	Part I. <ul style="list-style-type: none"> - Size of natural, semi-natural and restored habitats (m²) - Type of biodiversity structures - Number of biodiversity structures - Size of biodiversity structures (m²) - Share of insect friendly lighting zones (%) - Size of green roof (m²) - Size of green wall (m²) <ul style="list-style-type: none"> • Type of species used on the green elements (alien, native, monoculture, diverse) - Share of habitats connected (%) - Key indicator species <ul style="list-style-type: none"> • Monitored • Monitoring frequency (years) • Development of population (strong increase, increase, stagnation, reduction) - Alien invasive species <ul style="list-style-type: none"> • Presence of specie in your BOP or surrounding areas • Status Management • Status Monitoring • Monitored by

	<ul style="list-style-type: none"> - Does the company have an overview on the habitats in the surroundings of the facilities? (up to 500 m) <ul style="list-style-type: none"> • If Yes, do you have a concrete inventory or a rough overview? - Has this information about habitats and species in the surroundings been considered in the design of the BOP? - Were native species used in the created semi-natural areas? - Were native seeds used in the created semi-natural areas? - Do you have selected agriculture or agro-forestry plant species in your BOP? <ul style="list-style-type: none"> • If yes, indicate the plant species incorporated in your BOP and the variety of species - Do you have an overview of the biodiversity of the natural grasslands on your premises? <ul style="list-style-type: none"> • If Yes, please estimate the variety of plants. - Do you have an actual inventory of the forestry species? <ul style="list-style-type: none"> • If Yes, please indicate the forest plant species incorporated in your BOP and the variety of species. - Did you plan biotope corridors to connect habitats in the design phase? - Have you extended or created biotope corridors on the premises? <ul style="list-style-type: none"> • If yes, what % of habitats on your premises are connected (estimation)? - Does the company have a plan for the maintenance of BOP? <ul style="list-style-type: none"> • If Yes, Does the plan include objectives for the further development of BOP? - Does the company focus on specific aspects to improve quality of BOP areas? (multiple answers possible) - Who is in charge of specific maintenance requirements of BOP areas? <ul style="list-style-type: none"> • In case of external services: Did you specify maintenance requirements of BOP areas in the contract? - Did you select a gardener/company with experience in BOP? - Does the company select key indicator species to monitor the development of the BOP? <ul style="list-style-type: none"> • If Yes, indicate who does the selection, whether the key indicator species are monitored or not and how population is developing. - Do you know if any of the alien invasive species included in the catalogues that will be displayed when selecting the correspondent list showed when clicking on "Info button" is present in your premises or in the surroundings? <ul style="list-style-type: none"> • If Yes, what do you know about their development? - Do you control the alien invasive species? <ul style="list-style-type: none"> • In case you have identified alien invasive species in your premises or in their surroundings, have you informed the nature conservation authority? 	<ul style="list-style-type: none"> • Monitoring frequency (years) • Development of population (strong increase, increase, stagnation, reduction) <p>Part II.</p> <ul style="list-style-type: none"> - Overview on habitats in the surroundings - Use of native species - Use of native seeds - Diversity of natural grassland (1-4 species, 5-10 species, 20-40 species, more than 40 species) - Inventory of forestry species - Biotope corridors on the premises - Connection of habitats beyond the premises - Management of alien invasive species - Monitoring of alien invasive species - Plan for maintenance of BOP - Focus on specific aspects to improve <ul style="list-style-type: none"> • Extensification of maintenance • Avoidance of the use of pesticides • Avoidance of the use of chemical fertilizers - Key indicator species for monitoring
--	--	---

	<ul style="list-style-type: none"> • If Yes, did you receive support from the authority to eliminate/manage alien invasive species? 	
BOP improves biodiversity <u>outside</u> company areas	<ul style="list-style-type: none"> - Does the company contribute to the protection or restoration of habitats in the surroundings? • If Yes, indicate the type of restored or protected habitats. - Size of habitats restored or created - Do you monitor key indicator species of the habitats in the surroundings of your premises? - Which key indicator species are used for monitoring and who does the monitoring? - Are there possibilities to connect the habitats in your premise with nearby habitats? • If Yes, did you connect habitats or are you planning to do so? - Does the company have information about regional biotope corridor(s) in the region? - Have you already connected your habitat(s) with regional or national biotope corridors or other green infrastructure? • If yes, please indicate the number of connections. - Please indicate if your BOP is located in a biotope corridor or in a protected area. If your BOP is close to one of them, please estimate the distance to the nearest one. - Is a Standard Data Form of the protected area available? • If yes, indicate the link. 	<ul style="list-style-type: none"> - Type of restored or protected habitats - Size of habitats restored or created (m²) - Connection with habitats outside the premises (we are planning, already connected) - Contribution to regional or national biotope corridors other green infrastructure (limited, extended, none) - Connected habitats (fully, partly, planned, none) - Distance to the nearest biotope corridor or protected areas (km)
BOPs contribution or participation in large-scale initiatives	<ul style="list-style-type: none"> - Do you promote BOP or other biodiversity actions with stakeholders in the municipality? • If Yes, indicate activities you are involved and organizations or associations you are collaborating with. - Is the company informed about initiatives on biodiversity protection in the municipality? • If Yes, indicate to which local initiative does the company contribute/wants to contribute? - Is the company informed about any conservation projects of private organisations? - Do you support any biodiversity protection activities /projects of private organisations? • If Yes, indicate activities you are collaborating with. - Do you support any biodiversity protection activities /projects of private organisations? 	<ul style="list-style-type: none"> - Informed about biodiversity projects of NGOs - Supporting biodiversity initiatives of NGOs
Social Area		
BOPs influence in company's managers and employees' awareness on biodiversity	<ul style="list-style-type: none"> - Are decision-making managers and other employees involved or participating in BOP initiatives? • If yes, indicate the phases in which managers and other employees have participated. - How are managers and other employees regularly informed about BOP? - Do you notice an increase of awareness of the managers and employees regarding BOP and the contribution to biodiversity? 	<ul style="list-style-type: none"> - Phases of staff involvement - Phases of staff informing
BOP's contribution to employee's	<ul style="list-style-type: none"> - Is the company promoting activities for employees related to biodiversity? • If Yes, estimate % of staff participating in these initiatives. 	<ul style="list-style-type: none"> - Staff participating (%) - Type of activities - Feedback

<p>awareness raising and well-being</p>	<ul style="list-style-type: none"> - Which biodiversity related activities to involve staff have been organized since last year or since last monitoring period? - Is part of the BOP area used by the staff? <ul style="list-style-type: none"> • If Yes, indicate for what kind of activities are BOP areas used. - Does the company have information about BOP contribution to staff well-being? <ul style="list-style-type: none"> • If yes, have you received feedback from employees? 	
<p>BOPs contribution to awareness raising of stakeholders and citizens on biodiversity</p>	<ul style="list-style-type: none"> - Does the company invite stakeholders and/or the public to visit BOP areas? - Does the company carry out activities to raise citizens awareness on biodiversity? <ul style="list-style-type: none"> • If yes, select all activities carried out in the last year /since the last monitoring? - Who organizes the activities (you can select more than one)? - Are activities specially targeted to a specific stakeholder group (multiple answers possible)? - How many people did participate last year in the activities? - Does the company /collaborating organization ask for feedback? <ul style="list-style-type: none"> • If yes, what was the overall result? - Does the company plan to realize awareness-raising activities in the future? - If you have more information about your activities, please include links to documents, publications or other materials you consider relevant. 	<ul style="list-style-type: none"> - Activities - Target groups - Number of people participating - Feedback - Plans to realize awareness-raising activities
<p>Corporate Area</p>		
<p>BOP's integration into the management of the corporation</p>	<ul style="list-style-type: none"> - Does the company have an environmental management system in place? <ul style="list-style-type: none"> • If yes, please indicate. - Does the company have a sustainability policy or plan in place? <ul style="list-style-type: none"> • If yes, please indicate. - Are the creation of BOPs and BOPs' maintenance part of the environmental management system? <ul style="list-style-type: none"> • If yes, indicate since when is BOP part of the environmental management and mentioned in the environmental report. - Are the creation of BOPs and BOPs' maintenance part of the sustainability policy? <ul style="list-style-type: none"> • If yes, indicate since when. - Do you have information about the investment done by the company to create BOP areas on the site? <ul style="list-style-type: none"> • Exact total cost incurred for creating BOP areas on the site • Estimated total cost incurred for creating BOP areas on the site - Do you have information about the investment done by the company to maintain BOP areas on the site? <ul style="list-style-type: none"> • Exact total cost incurred to maintain BOP areas on the site • Estimated total cost incurred to maintain BOP areas on the site - Does the company plan further investment in BOP on the site? - How much do you plan to invest? (Approximately) 	<ul style="list-style-type: none"> - Type of management system - Sustainability policy or plan in place - Investment to create BOP (€) - Investment to maintain BOP (€) - Investment in BOP planned (€) - Year of investment (year) - Annual budget for biodiversity activities (€)

	<ul style="list-style-type: none"> - When do you plan to invest? - Does the company have an annual budget for biodiversity-related activities? <ul style="list-style-type: none"> • If yes, could you estimate the annual budget? 	
Biodiversity integration across the company	<ul style="list-style-type: none"> - Did the company consider biodiversity aspects in management decisions before the existence of BOP? - Did the company carry out a risk assessment regarding the impacts on biodiversity? <ul style="list-style-type: none"> • If yes, what is the biggest impact of the company on biodiversity? - Does the environmental or sustainability policy of the company include (measurable) objectives and measures for biodiversity protection apart from BOP? <ul style="list-style-type: none"> • If Yes, indicate which departments/activities of the company consider biodiversity and which objectives have been settled. - Is information on biodiversity included in any kind of report? <ul style="list-style-type: none"> • If Yes, specify what kind of report (multiple options are possible) does include information about biodiversity-related aspects of the company. Please provide a link. - Did the company select one or more Key Performance Indicators (KPIs) to monitor biodiversity aspects beyond BOP? <ul style="list-style-type: none"> • If yes, please indicate what KPI(s) related to biodiversity do you monitor? (at least one) - Do you inform your customers about your activities to improve biodiversity performance? - How do you provide information to your customers? 	<ul style="list-style-type: none"> - Consideration biodiversity in management decisions before BOP - Biodiversity risk assessment - Biggest impact on biodiversity - Measurable objectives for biodiversity apart from BOP - Objectives/ measures apart from BOP <ul style="list-style-type: none"> • Corporate, Investments, Planning/ Management, Product design, procurement, supply chain, production, transport, marketing/ communication, waste recycling/disposal - Type of Report includes biodiversity - Key Performance Indicator <ul style="list-style-type: none"> • Frequency of monitoring (year) • Results of the latest monitoring (positive, neutral, negative)
Biodiversity promotion across business sector	<ul style="list-style-type: none"> - Do you regularly inform other companies of your sector about BOP? - Do you encourage other companies to consider BOP in their real state? - Do you regularly inform your suppliers about BOP? <ul style="list-style-type: none"> • If yes, which tier do you provide information? - Do you inform business associations/NGOs/Public Authorities about your activities to improve biodiversity performance beyond BOP? <ul style="list-style-type: none"> • If yes, which organisations do you inform? - Does a regional or national Business & Biodiversity Initiative exist in your country? - Do you collaborate with a regional, national or international Business & Biodiversity initiative? <ul style="list-style-type: none"> • If yes, what is the name of the initiative with which you are collaborating? 	<ul style="list-style-type: none"> - Name of B&B initiative the company is collaborating with

Annex I Alien Invasive Species

The following list includes the alien invasive species proposal made by specialists to monitor German, Spanish and Slovak BOP areas according to the most common species in BOP areas.

Germany

Pflanzen		
English common name	Deutscher Name	Wissenschaftliche Bezeichnung
Ash-leaved maple	Eschen-Ahorn	<i>Acer negundo</i>
Tree of heaven	Götterbaum	<i>Ailanthus altissima</i>
New Zealand pigmyweed	Nadelkraut	<i>Crassula helmsii</i>
Japanese knotweed	Gewöhnlicher Japan-Knöterich	<i>Fallopia japonica</i>
	Sachalin-Knöterich	<i>Fallopia sachalinensis</i>
	Bastard-Knöterich	<i>Fallopia x bohemica</i>
Red Ash	Rot-Esche	<i>Fraxinus pennsylvanica</i>
Giant hogweed	Riesen-Bärenklau	<i>Heracleum mantegazzianum</i>
Big-leaved lupine	Vielblättrige Lupinie	<i>Lupinus polyphyllus</i>
Western skunk	Amerikanischer Stinktierkohl	<i>Lysichiton americanus</i>
Eastern white pine	Weymouth-Kiefer	<i>Pinus strobus</i>
Canadian poplar	Bastard-Pappel	<i>Populus x canadensis</i>
Black cherry	Späte Traubenkirsche	<i>Prunus serotina</i>
Douglas fir	Gewöhnliche Douglasie	<i>Pseudotsuga menziesii</i>
Northern red oak	Rot-Eiche	<i>Quercus rubra</i>
Black locust	Robinie	<i>Robinia pseudoacacia</i>
Japanese rose	Kartoffel-Rose	<i>Rosa rugosa</i>
Canada goldenrod	Kanadische Goldrute	<i>Solidago canadensis</i>
Tall goldenrod	Späte Goldrute	<i>Solidago gigantea</i>
Common cordgrass	Salz-Schlickgras	<i>Spartina anglica</i>
American culture blueberry	Amerikanische Kultur-Heidelbeere	<i>Vaccinium angustifolium x corymbosum</i>
Himalayan balsam	Drüsiges Springkraut	<i>Impatiens glandulifera</i> Royle
Bermuda grass	Gewöhnliches Hundszahngras	<i>Cynodon dactylon</i>
American willowherb	Drüsiges Weidenröschen	<i>Epilobium ciliatum</i>
Yellow archangel	Silber-Goldnessel	<i>Galeobdolon argentatum</i>
Caucasian stonecrop	Kaukasus-Glanzfetthenne	<i>Phedimus spurius</i>
Common lilac	Gewöhnlicher Flieder	<i>Syringa vulgaris</i>
White paniced aster	Lanzett-Herbstaster	<i>Symphotrichum lanceolatum</i>

Wasserpflanzen		
English common name	Deutscher Name	Wissenschaftliche Bezeichnung
Canadian waterweed	Kanadische Wasserpest	<i>Elodea canadensis</i>
Western waterweed	Schmalblättrige Wasserpest	<i>Elodea nuttallii</i>
Floating pennywort	Großer Wassernabel	<i>Hydrocotyle ranunculoides</i>
Carolina fanwort	Karolina-Haarnixe	<i>Cabomba caroliniana</i> Gray
Curly waterweed	Wechselblatt-Wasserpest	<i>Lagarosiphon major</i> (Ridley) Moss
Parrot's feather	Brasilianisches Tausendblatt	<i>Myriophyllum aquaticum</i> (
	Großer Algenfarn	<i>Azolla filiculoides</i>

Fische		
English common name	Deutscher Name	Wissenschaftliche Bezeichnung
Siberian sturgeon	Sibirischer Stör	<i>Acipenser baerii</i>
Black bullhead	Schwarzer Zwergwels	<i>Ameiurus melas</i>
Brown bullhead	Brauner Zwergwels	<i>Ameiurus nebulosus</i>

Grass carp	Graskarpfen	Ctenopharyngodon idella
Round gob	Schwarzmundgrundel	Neogobius melanostomus
Rainbow trout	Regenbogenforelle	Oncorhynchus mykiss
Chinese sleeper	Amurgrundel	Percottus glenii
Fathead minnow	Fettköpfige Elritze	Pimephales promelas

Amphibien		
English common name	Deutscher Name	Wissenschaftliche Bezeichnung
American bullfrog	Ochsenfrosch	Rana catesbeiana
Levant water frog	Levantinischer Wasser-frosch	Pelophylax bedriagae
Italian crested newt	Alpenkammolch	Triturus carnifex

Reptilien		
English common name	Deutscher Name	Wissenschaftliche Bezeichnung
Yellow-bellied slider	Rotwangen-Schmuckschildkröte	Trachemys scripta

Säugetiere		
English common name	Deutscher Name	Wissenschaftliche Bezeichnung
Raccoon	Waschbär	Procyon lotor
American mink	Mink oder Amerikanischer Nerz	Mustela vison
Muskrat	Bisamratte	Ondatra zibethicus
Coypu	Nutria oder Biberratte	Myocastor coypus
Brown rat	Wanderratte	Rattus norvegicus

Insekten		
English common name	Deutscher Name	Wissenschaftliche Bezeichnung
Asian ladybeetle	Asiatischer Marienkäfer	Harmonia axyridis

Vögel		
English common name	Deutscher Name	Wissenschaftliche Bezeichnung
Rose-ringed parakeet	Halsbandsittich	Psittacula krameri
Egyptian goos	Nilgans	Alopochen aegyptiacus
Chukar partridge	Chukarhuhn	Alectoris chukar

Spain

Spanish common name	English common name	Scientific name
Cotorra argentina	Monk parakeet	Myiopsitta monachus
Cotorra de kramer	Rose-ringed Parakeet	Psittacula krameri
Avispa asiática	Asian vesp	Vespa velutina
Tortuga de Florida	Slider turtles, Florida turtles	Trachemys scripta elegans
Uña de gato	Cat's claw	Carpobrotus edulis Carpobrotus acinaciformis
Camalote, flor de bora o jacintos de agua	Water hyacinth	Eichhornia crassipes
Ailanto	Tree of heaven	Ailanthus altissima
Eucalipto	Eucalyptus trees	Eucalyptus ssp.
Mimosas	Mimosa tree	Acada dealbata

Slovakia

Slovak common name	English common name	Scientific name
Amrózia palinolistá	Common Ragweed	Ambrosia artemisiifolia
Javorovec jaseňolistý	Ash-leaved Maple	Negundo aceroides
Pajaseň žliazkatý	Tree of Heaven	Ailantus altissima
Pohánkovec (rod)	Knotweed (various species)	Fallopia sp.
Sumach páľkový	Staghorn sumach	Rhus typhina
Zlatobyl kanadská	Canada Goldenrod	Solidago canadensis
Zlatobyl obrovská	Giant Goldenrod	Solidago gigantea

Annex II Key indicator species

The following list contains the indicator species suggested by German experts for monitoring German BOP areas according to the most common species found in BOP areas. The list of animals was chosen to indicate structural richness (old trees, dry habitats, wetter habitats), water quality, and diversity of insects and vertebrates.

English common name	German Name	Scientific name	indicates
Odonata	Libelle	all 81 species in Germany	Presence of water that is close to natural water (not always, but often enough).
Amphibians (Toad, frog, newt, salamander)	Amphibien (Kröte, Frosch, Molch, Salamander)		The presence of amphibians always indicates structural richness in wetter habitats
Lizards	Eidechse	Lacerta agilis Podarcis muralis	Attractive dry habitats
Woodpecker	Spechte	Dendrocopos major Dryobates minor Picus viridis Sitta europaea	Shows presence of older trees
Common kestrel	Turmfalke	Falco tinnunculus	Shows structural richness and availability of small vertebrates
Common magpie	Elster	Pica pica	Ecologically valuable bushes and hedges
Swallow	Schwalbe	Hirundo rustica Delichon urbicum	Show insects in the air, which usually come from not too far
European goldfinch	Stieglitz	Carduelis carduelis	Perennials, seeds

Bats	Fledermäuse	all 25 species in Germany	Flying through: shows function as flight path Hunting: shows good insect supply
Sciurus (not the grey squirrel)	Eichhörnchen (Nicht die Grauhörnchen)	Sciurus vulgaris	Near-natural woody plants (usually do not eat the fruits of exotic woody plants)

The following list includes the key indicator species selection proposal made by Spanish specialists to monitor Spanish BOP areas:

Spanish common name	English common name	Scientific common name
Conejo	Rabbit	Oryctolagus cuniculus
Insectos polinizadores (abejas u otros)	Pollinating insects (bees,others...)	Apis mellifera
Libélula	Dragonfly	Anisoptera
Efímeras	Mayfly	Ephemeroptera
Lirón careto	Garden dormouse	Elyomis quercinus
Ratón de campo	Wood mouse / Field mouse	Apodemus sylvaticus
Murciélagos (en general)	Chiroptera	Bat
Lavándula	Lavender	Lavandula ssp.
Romero	Rosemary	Rosmarinus officinalis
Enebro y sabinas	Juniper and savin juniper	Juniperus spp.
Serbales, mostajos	Mountain ash, whitebeam	Sorbus spp.
Orquídeas (en general)	Wild orchids	Orchidaceae
Durillos	Brambles, dogwood.	Viburnum spp.
Plantas trepadoras (madreselvas, zarzaparrillas)	Climbing plants (honeysuckle, sarsaparrilla)	Lonicera ssp Smilax aspera
Quercus (en general)	Oaks (in general)	Quercus spp.